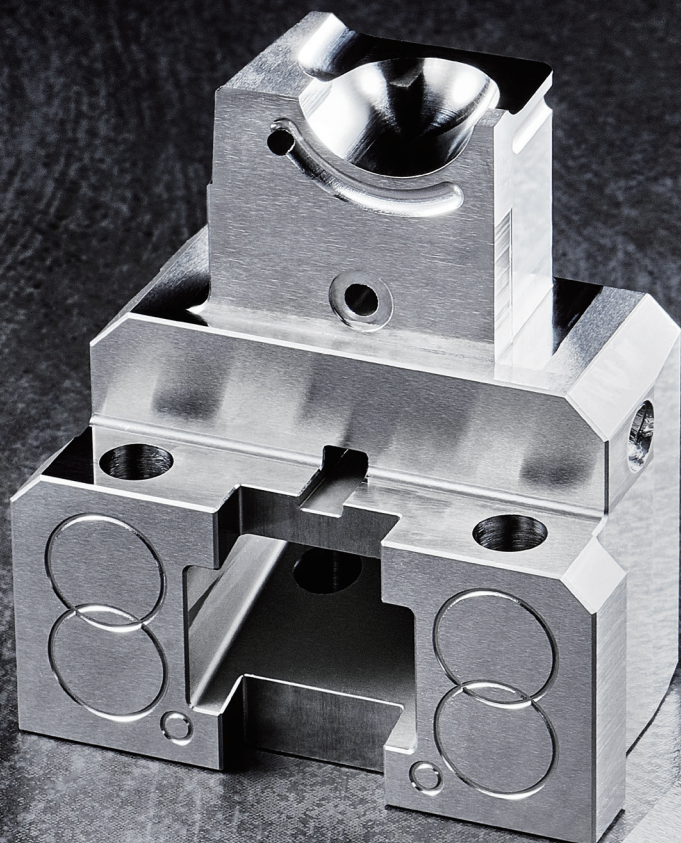


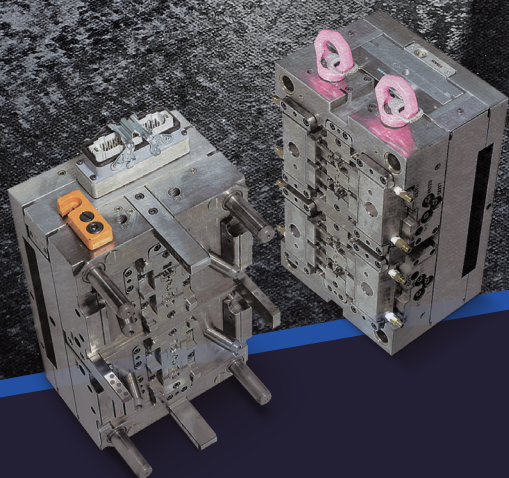


CHAN WAY



BE YOUR
FIRST CHOICE

PASSION × PRECISION × PERSISTENCE

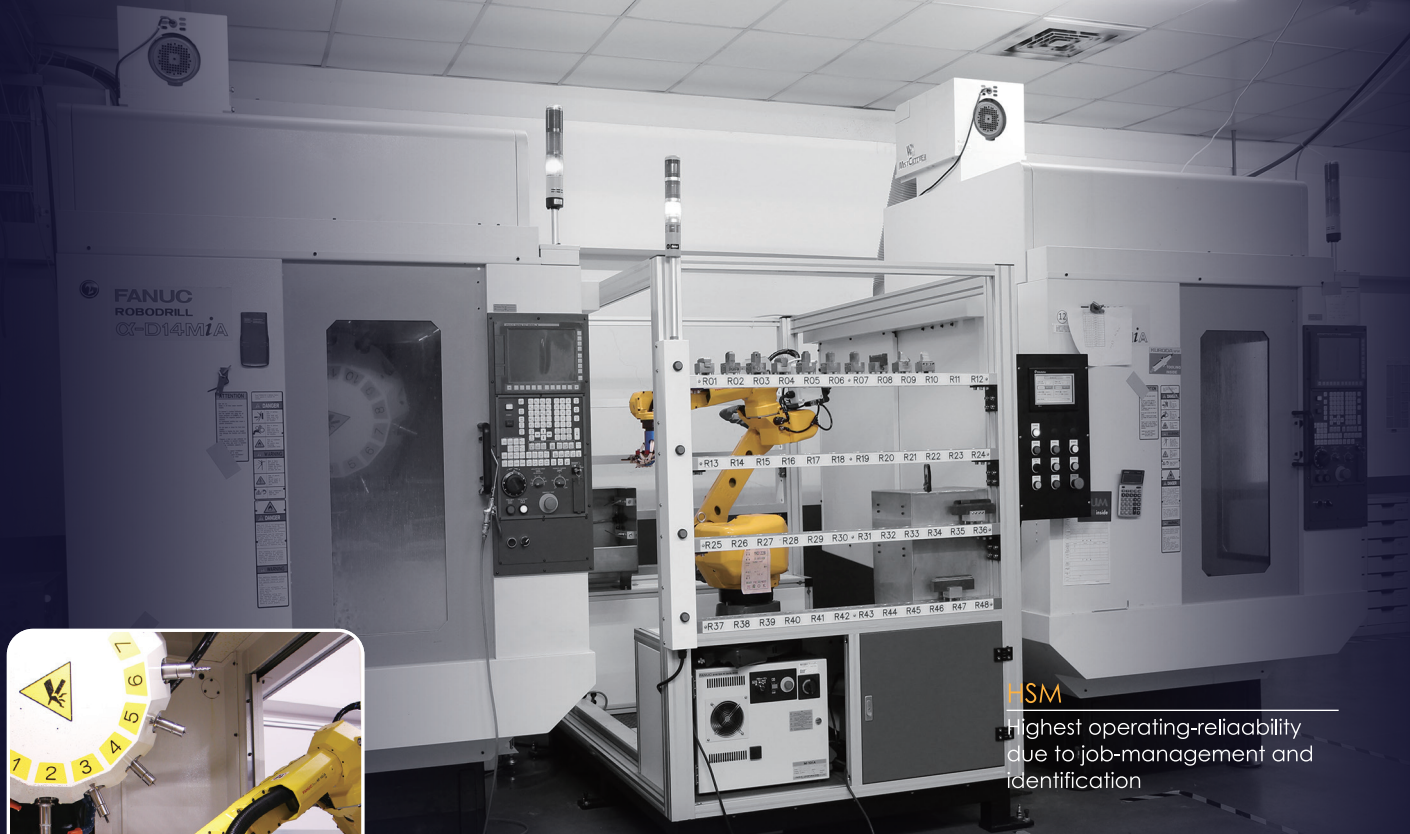


PLASTIC MOLD

STAMPING TOOL

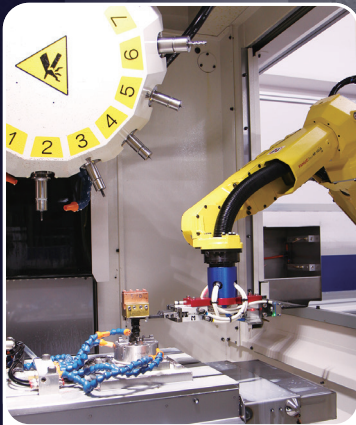
CUSTOMIZE PARTS

AUTOMATION



HSM

Highest operating-reliability due to job-management and identification



HSM

- Ability to quick replace the electrode
- Reduce labor work hours
- Able to manage jobs all year round



EDM

- Increase your flexibility and productivity



EDM

- Reduce lateral and shutdown times
- More operation-comfort and process-stability



EDM

- Hold up to 216 electrodes
- Hold up to 36 work pieces

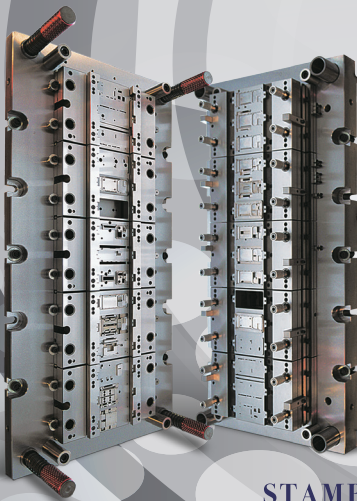
<<< Be your first choice



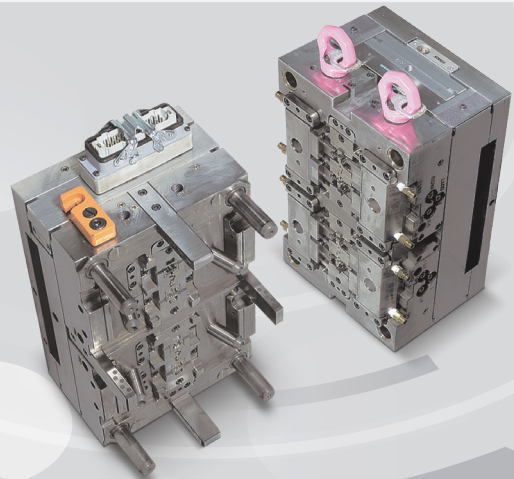


What is CHAN WAY?

Chan Way was established early 1997 with its head office in New Taipei City, Taiwan, facilities in Taiwan and China. Due to the necessity and importance of services, a technical service center was set up in Europe. to nearly communicate with customers efficiently. In the field of precision machining process, Chan Way has successfully developed customers not only in Taiwan and China, but also in Europe, US and Japan after a period of efforts. Today, the company sales revenue for overseas market has been growing to the level of more than 70%, which shows the deep trust in our quality and reliability, further proving the reputation of our expertise in this field.



STAMPING TOOL



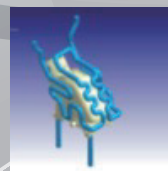
PLASTIC INJECTION MOLD/MIM MOLD

SUMITOMO , FANUC 50~150ton

Difference of Cooling

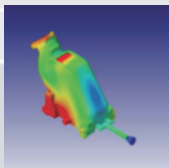


General mold cooling

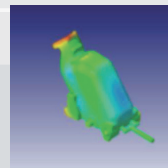


Conformal cooling
manufacture by OPM250L

Analysis Deformation Difference



General mold cooling



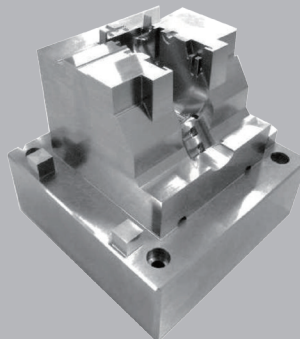
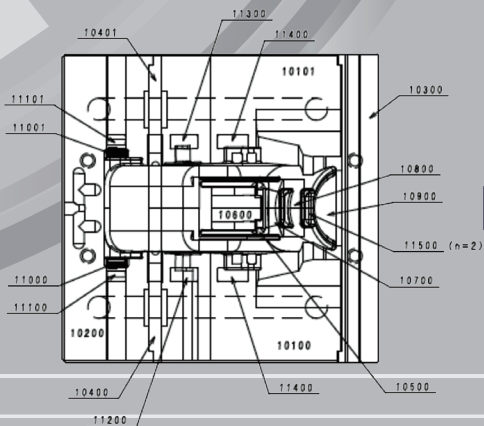
Conformal cooling
manufacture by OPM250L

CAE Conformal Cooling Design

Moldex3D simulation result show Conformal cooling have good cooling efficient and smaller warpage



OPM manufacturing molds



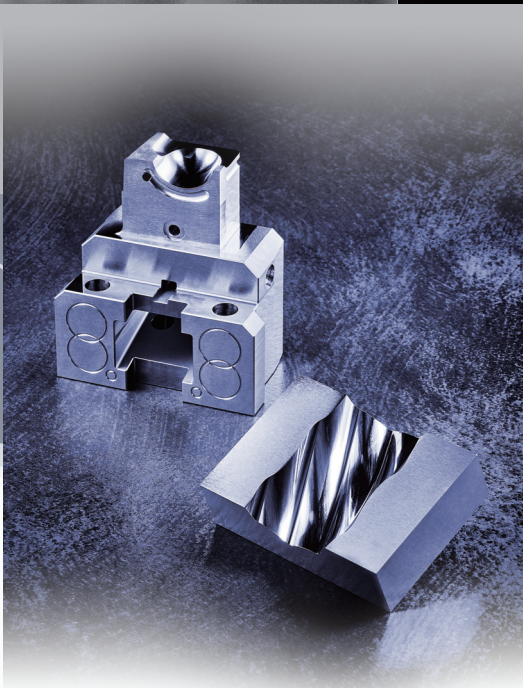
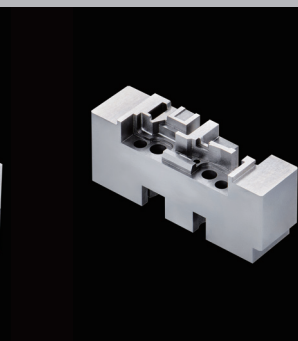
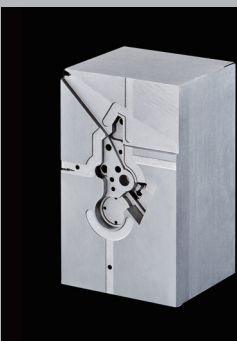
OPM 3D manufacturing molds

General Manufacture Part Qty.21 Pcs · · · Manufacture time:448.25h

Manufacture by OPM250L:375h+Extra Work:10h=385h

Manufacture by OPM250L:【 63.25h SAVING 】 time reduce 14%

PART NAME	PART NUMBER	QTY	ESTIMATE HOURS
FRONT INSERT	10100	2	171.6H
FRONT INSERT	10200	1	51.15H
FRONT INSERT	10300	1	6.05H
FRONT INSERT	10400	2	22.55H
FRONT INSERT	10500	1	35.8H
FRONT INSERT	10600	1	7.7H
FRONT INSERT	10700	1	20.85H
FRONT INSERT	10800	1	25.3H
FRONT INSERT	10900	1	25.3H
FRONT INSERT	11000	2	20.35H
FRONT INSERT	11100	2	13.2H
FRONT INSERT	11200	1	13.2H
FRONT INSERT	11300	1	12.65H
FRONT INSERT	11400	2	14.3H
FRONT INSERT	11500	2	8.25H
TOOL		21	448.25H



<<< Be your first choice

Geography CW Headquarter (CWT)

Taoyuan International Airport ← 10km → CWT HQ



CWT SIZE : 6,000 SQ / Meter

- 3F No.270, Dechang St., Yingge Dist., New Taipei City 23943, Taiwan (R.O.C.)
- Tel: +886-2-26771052
- Fax: +886-2-2677117

Geography CW-Yunlin Plant(CWY)

Taoyuan International Airport ← 90mins by HSR → CWY



CWY SIZE : 8,000 SQ / Meter

- No.14-8, Jhongjheng Rd., Baojhong Township, Yunlin County 63441, Taiwan (R.O.C.)
- Tel: +886-5-6971115
- Fax: +886-5-6971155



CHAN WAY FIRST SEIKO CO.

3F No.270, Dechang St., Yingge Dist., New Taipei City 23943, Taiwan (R.O.C.)

Tel: +886-22677-1502 #209 Fax: +886-22677-1147 Vat: 24699097 Mail: info@cwfsmold.com

www.cwfsmold.com